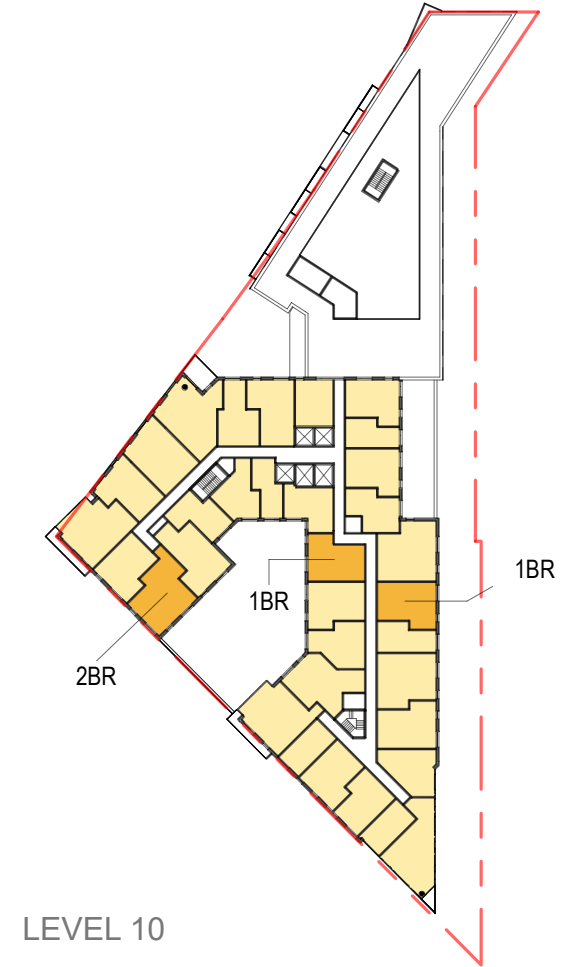
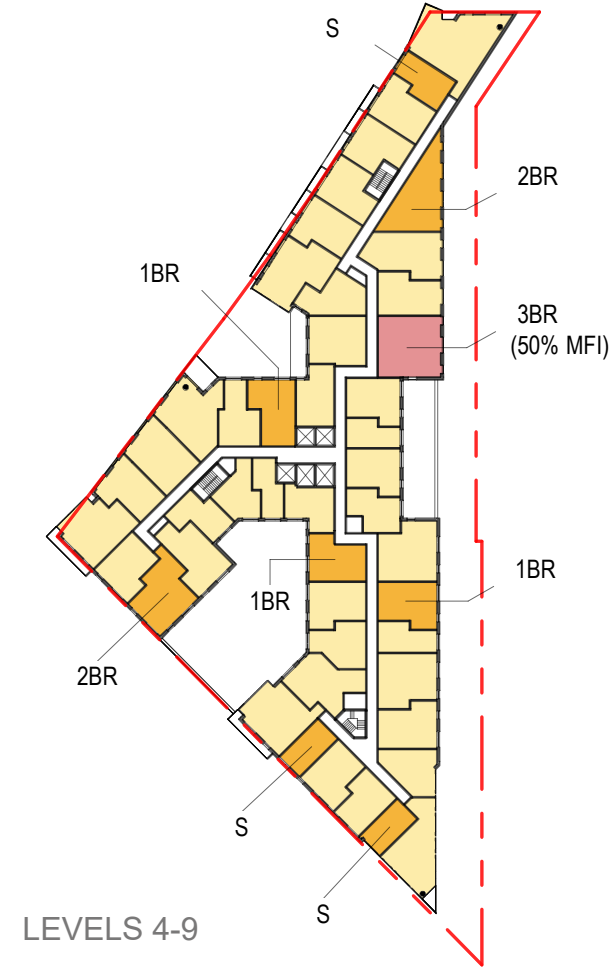
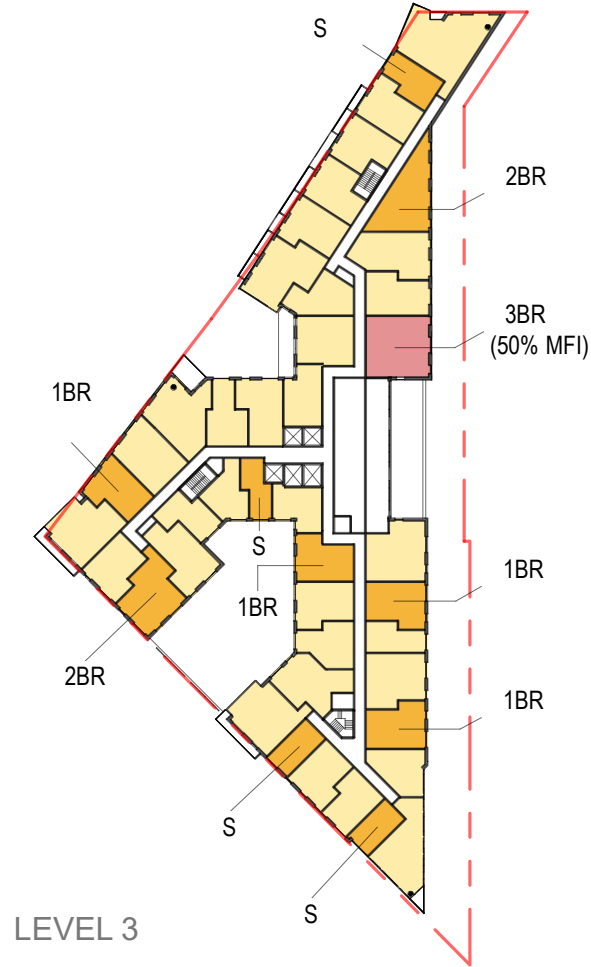
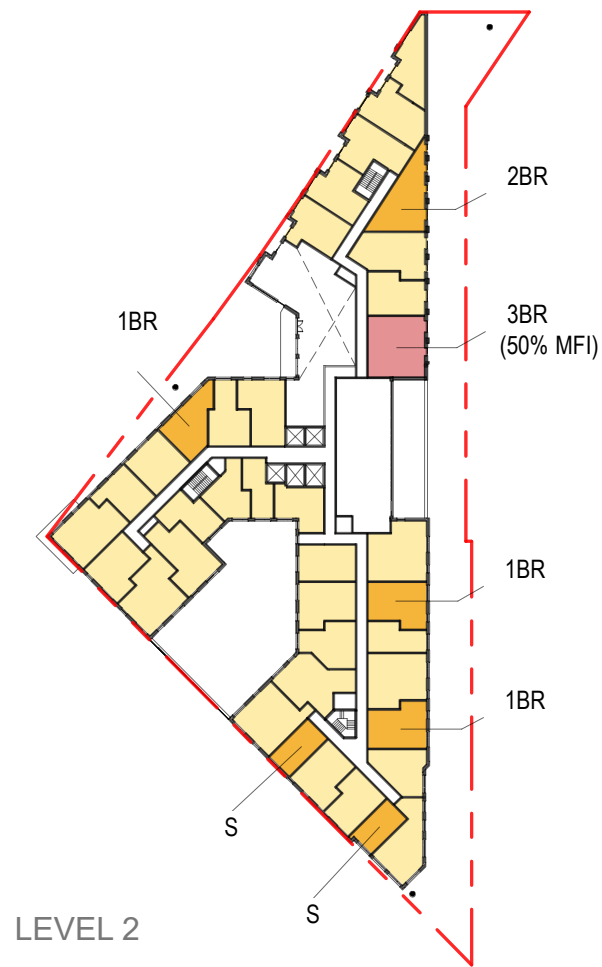


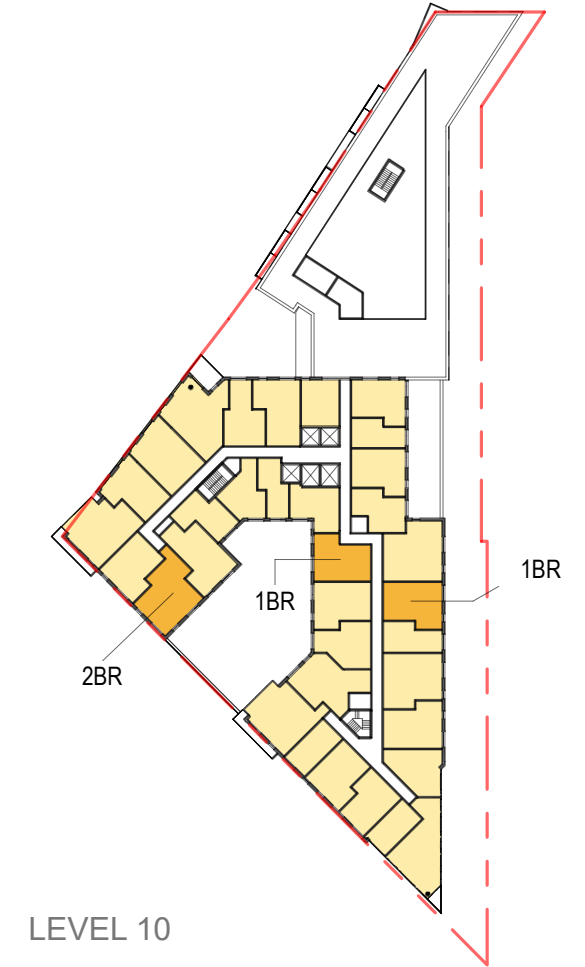
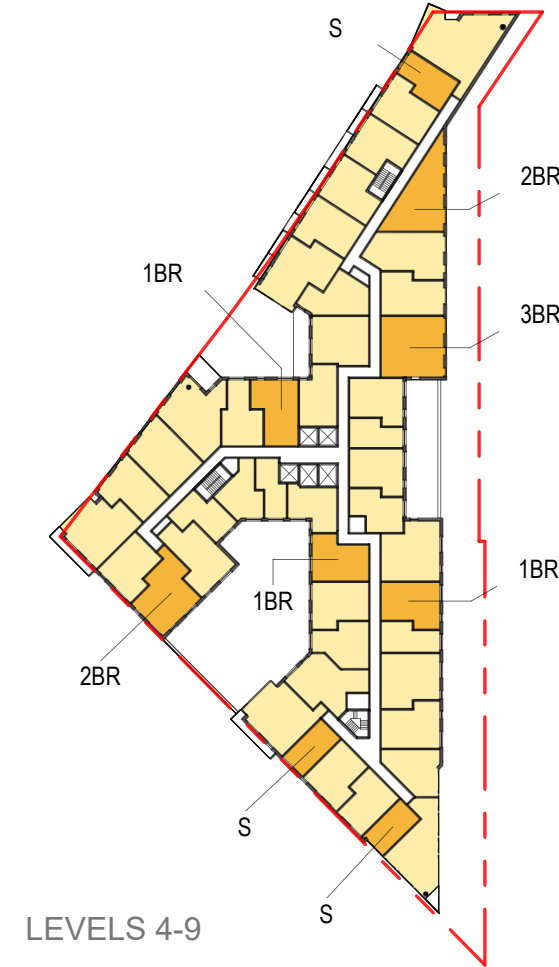
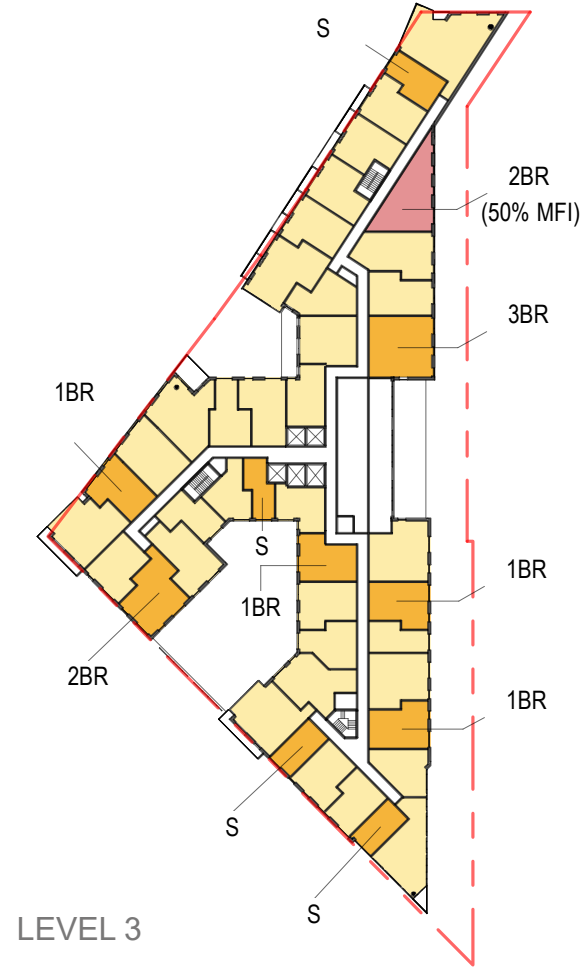
(Updated 11/21/2022)



Inclusionary Zoning Unit Mix					
Floor	Studio	1 BR	2 BR	3 BR	Total
Level PH	0	0	0	0	0
Level 13	0	0	0	0	0
Level 12	0	0	0	0	0
Level 11	0	0	0	0	0
Level 10	0	2	1	0	3
Level 9	3	3	2	1	9
Level 8	3	3	2	1	9
Level 7	3	3	2	1	9
Level 6	3	3	2	1	9
Level 5	3	3	2	1	9
Level 4	3	3	2	1	9
Level 3	4	4	2	1	11
Level 2	2	3	1	1	7
Level 1	0	0	0	0	0
Total	24	27	16	8	75

Inclusionary Zoning SQFT Requirements	
Residential GFA	434,475 SF
15% of Residential GFA for IZ	65,171 SF
Estimated Efficiency	84%
Penthouse GFA	5,334 SF
15% of Penthouse GFA for IZ	800 SF
Estimated NSF to be provided for IZ	55,616 SF

Inclusionary Zoning Unit Mix						
Unit Type	IZ Units	IZ Unit SQFT	IZ Unit %	Market Units	Market Unit %	Total Units
Studio (Studio, 1 BR-JR)	24	11,203 SF	32%	137	32%	161
1 Bedroom (1 BR, 1 BR+D)	27	19,885 SF	36%	200	47%	227
2 Bedroom (2 BR, 2 BR+L)	16	15,874 SF	21%	86	20%	102
3 Bedroom (3 BR)	8	9,036 SF	11%	0	0%	8
Total	75	55,998 SF		423		498



Inclusionary Zoning Unit Mix					
Floor	Studio	1 BR	2 BR	3 BR	Total
Level PH	0	0	0	0	0
Level 13	0	0	0	0	0
Level 12	0	0	0	0	0
Level 11	0	0	0	0	0
Level 10	0	2	1	0	3
Level 9	3	3	2	1	9
Level 8	3	3	2	1	9
Level 7	3	3	2	1	9
Level 6	3	3	2	1	9
Level 5	3	3	2	1	9
Level 4	3	3	2	1	9
Level 3	4	4	2	1	11
Level 2	2	3	1	1	7
Level 1	0	0	0	0	0
Total	24	27	16	8	75

Inclusionary Zoning SQFT Requirements	
Residential GFA	434,475 SF
15% of Residential GFA for IZ	65,171 SF
Estimated Efficiency	84%
Penthouse GFA	5,334 SF
15% of Penthouse GFA for IZ	800 SF
Estimated NSF to be provided for IZ	55,616 SF

Inclusionary Zoning Unit Mix						
Unit Type	IZ Units	IZ Unit SQFT	IZ Unit %	Market Units	Market Unit %	Total Units
Studio (Studio, 1 BR-JR)	24	11,203 SF	32%	137	32%	161
1 Bedroom (1 BR, 1 BR+D)	27	19,885 SF	36%	200	47%	227
2 Bedroom (2 BR, 2 BR+L)	16	15,874 SF	21%	86	20%	102
3 Bedroom (3 BR)	8	9,036 SF	11%	0	0%	8
Total	75	55,998 SF		423		498